

COMMUNITY OUTREACH REPORT

YUROK BROWNFIELDS PROJECT HUMBOLDT COUNTY, CALIFORNIA

Prepared for:

Yurok Tribe Environmental Program

190 Klamath Boulevard
Klamath, California 95548

September 9, 2009

Prepared by:

Orrin Plocher, Stan Thiesen, and Julie Savona

of



Freshwater Environmental Services

78 Sunny Brae Center
Arcata, California 95521
Phone (707) 839-0091

TABLE OF CONTENTS

LIST OF FIGURES	2
LIST OF APPENDICES	3
1.0 INTRODUCTION	4
2.0 COMMUNITY OUTREACH MEETING FORMAT	5
2.1 Presentation	5
2.2 Questionnaire	5
2.3 Informal Discussions	5
3.0 YUOK TRIBAL DISTRICT MEETING (Weitchpec, California)	6
3.1 Meeting Information.....	6
3.2 Site Specific Information.....	6
4.0 YUOK TRIBAL DISTRICT MEETING (Pecwan, California).....	8
4.1 Meeting Information.....	8
4.2 Site Specific Information.....	8
5.0 CONCLUSIONS.....	9

LIST OF FIGURES

FIGURE 1 1966 Aerial Photograph with Site Configuration, Former Mill

LIST OF APPENDICES

- APPENDIX A Community Outreach Presentation
- APPENDIX B Community Outreach Questionnaire

1.0 INTRODUCTION

This Community Outreach Report for the Yurok Tribe Brownfields project was prepared by Freshwater Environmental Services (FES), on behalf of the Yurok Tribe. The Yurok Tribe and FES are preparing Phase I Environmental Site Assessments (ESAs) on four Brownfields sites located on Yurok Tribal property. The sites being investigated include the following:

- **Site #1 Tulley Creek Former Illegal Dumpsite.** The project area is located at the end of Tulley Creek Road in Humboldt County, APN# 534-182-015.
- **Site #2 Brizard's Former Gas Station/General Store.** The property is located on Highway 169, west of the town of Weitchpec, APN# 530-061-011-03
- **Site #3 JC Gist Mine.** The former mine is located approximately one half mile northwest of the town of Weitchpec, APN# 530-061-005.
- **Site #4 Former Mill Site.** The former mill is located off of Upper Cappell Road approximately 5 miles northwest of the town of Weitchpec, APN# 534-151-020.

An essential part of the Phase I ESAs is the collection of historical information directly from Yurok Tribal members about each of the Brownfields sites. FES has facilitated and participated in two Yurok Tribal District Meetings for the purpose of public education regarding the Brownfields Program, providing status reports on the four project sites and collecting historical information regarding the previous uses and activities on the four Brownfields sites. Maps and aerial photographs of the Brownfields sites were provided prior to and during the meetings and the participants were encouraged to note information directly onto the maps and photographs, as well completing the questionnaire to obtain information from the community.

Ken Henderson, Yurok Tribal Environmental Program representative, FES Project Coordinator, Orrin Plocher and FES Project Geologist Julie Savona attended the two Yurok Tribal District meetings to present information on the Brownfields project and gather community input.

This report is organized as follows:

- The public meeting format is described in Section 2.0;
- The results of the Weitchpec Tribal District Meeting are described in Section 3.0;
- The results of the Pecwan Tribal District Meeting are described in Section 4.0;
- and
- Conclusions are present in Section 5.0.

2.0 COMMUNITY OUTREACH MEETING FORMAT

2.1 Presentation

Prior to the meetings a collection of large format labeled historic photographs, aerial photographs and topographic maps of the Sites were distributed on the meeting tables. Following an introduction by the Yurok Tribal Environmental Program representative, FES made the presentations to the Tribal District Meetings. A copy of the presentation is included in Appendix A. The goals of the presentations were as follows:

- Provide information about the Brownfields process;
- Define Phase I Environmental Site Assessments;
- Provide currently known information regarding each of the Sites; and
- Collect additional historical information from the attendees regarding the historic operations at each of the Sites.

2.2 Questionnaire

During the presentations attendees were encouraged to respond to questions related to each of the four Sites on the questionnaires. A copy of the questionnaire is included in Appendix B. The information gathered from the community came in the form of informal discussions between FES staff and community members. The questionnaires were not utilized during the meetings as envisioned but may prove useful as they are informally circulated in the community following the meetings and returned to FES.

2.3 Informal Discussions

During and following the presentations meeting attendees were encouraged to provide any historical information verbally to FES staff which was noted.

3.0 YUOK TRIBAL DISTRICT MEETING (Weitchpec, California)

3.1 Meeting Information

The Yurok Tribe District Meeting in Weitchpec, California was attended by FES on June 29, 2009. The meeting was held at 1:00 PM in the Yurok Tribal District office in Weitchpec, California. The presentation by FES was informal with time for specific site discussions during and following the presentation.

3.2 Site Specific Information

- **Site #1 Tulley Creek Former Illegal Dumpsite.**

Attendees indicated that the “dump site” was actually the residence of an individual that was described as a “collector”. The attendees referred to the Site as the “Abbott Dump”. None of the attendees recognized or know the use of the aboveground storage tank located on the parcel. Some attendees speculated that it may have been used for water or fuel storage for use in local logging operations. There were general rumors regarding meth labs in the area and waste entering the creeks. No additional information was provided about this Site.

- **Site #2 Brizard’s Former Gas Station/General Store.**

Attendees included the current residential occupants of the Site. The occupants indicated that following a recent storm that knocked over a power pole, crews dug and removed soil impacted by the transformer. The occupants also indicated that they have visually seen pipes associated with a UST that is present beneath the property. The pipes were made visible during a 2005 Caltrans highway realignment investigation. Several attendees stated that no vehicle maintenance took place at the property. No additional information was provided about this Site.

- **Site #3 JC Gist Mine.**

A nearby resident to the Site indicated that there were “rust colored seeps” just downstream of the former mine. Attendees also indicated that the mining operation was located just west of Gist Creek. No additional information was known provided about this Site.

- **Site #4 Former Mill Site.**

Attendees indicated that the mill was the Weitchpec Lumber Company Mill. It also was referred to as the “Gibbons Mill”. The mill was noted to have been built in 1948. It was noted by several familiar with the mill that wood treatment did not take place at the mill. The mill processed Douglas fir and “Emerson” converted it into a stud mill prior to it burning down in the 1960s. The Gibbons brothers operated a truck shop on the level area associated with the mill. It was noted that the shop generated waste oil and stored and dispensed fuel. One of the attendees was able to note the general configuration of structures associated

with the mill including the conical burner, saw mill, planer mill, log pond and truck shop. The general mill configuration is included in Figure 1.

4.0 YUROK TRIBAL DISTRICT MEETING (Pecwan, California)

4.1 Meeting Information

The Yurok Tribe District Meeting in Pecwan, California was attended by FES on June 29, 2009. The meeting was held at 7:00 PM in the Yurok Tribal District office in Pecwan, California. The presentation by FES was informal with time for specific site discussions during and following the presentation.

4.2 Site Specific Information

- **Site #1 Tulley Creek Former Illegal Dumpsite.**

Attendees had no additional information about this Site.

- **Site #2 Brizard's Former Gas Station/General Store.**

Attendees had no additional information about this Site.

- **Site #3 JC Gist Mine.**

Attendees had no additional information about this Site.

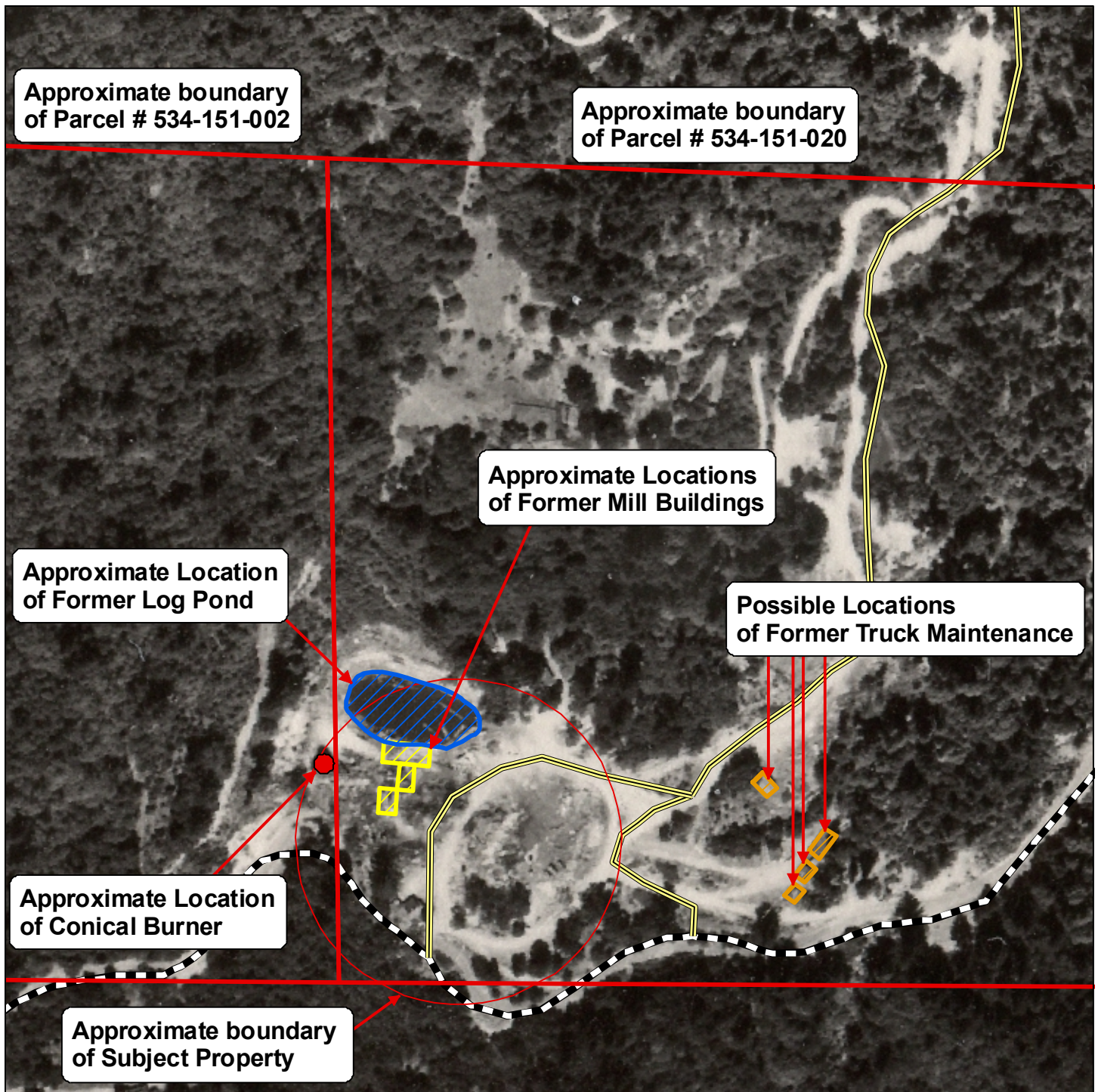
- **Site #4 Former Mill Site.**

One attendee indicated the storage and use of fuels at the mill site. No additional information about this Site was provided.

5.0 CONCLUSIONS

Important information was acquired about all four of the Brownfields Sites. The information regarding each of the Sites will be included in the respective Phase I ESA reports.

FIGURES



Feet
0 50 100 200 300 400 500

LEGEND

Base Image Data Source: 1966 aerial photograph scan obtained by FES from Humboldt County Public Works Department

ALL LOCATIONS APPROXIMATE

Yurok Tribe
Environmental Program

Figure 1
1966 Aerial Photograph
Former Mill Site
Humboldt County, California



Freshwater Environmental Services

Date: 9-2-09

By: SJT

APPENDIX A
COMMUNITY OUTREACH PRESENTATION

Yurok Tribe Brownfields Phase I Environmental Site Assessments

Prepared by:



Freshwater Environmental Services
Orrin Plocher, Stan Thiesen, Julie Savona

Brownfields

- Brownfields are properties that are contaminated, or thought to be contaminated, and are underutilized due to perceived remediation costs and liability concerns.
- Funding to increase Tribal capacity to meet brownfields cleanup and redevelopment challenges.
- Funding supports the restoration of contaminated Tribal lands to protect the community's health and the environment.
- Brownfields grants support site assessments.

Freshwater Environmental Services

Phase I Environmental Site Assessments

- Identify Recognized Environmental Conditions (ASTM)

"The presence or likely presence of any hazardous substances or petroleum products on a property under conditions that indicate an existing release, a past release, or a material threat of a release of any hazardous substances or petroleum products into structures on the property or into the ground, groundwater or surface water of the property. The term includes hazardous substances or petroleum products even under conditions in compliance with laws." (ASTM)

Freshwater Environmental Services

Recognized Environmental Conditions

1. Hazardous substances or petroleum products
2. Existing release
3. Past release
4. Material threat of release
5. Structures, ground, groundwater or surface water

Freshwater Environmental Services

Phase I ESA Process

- Records Review
 - State, Tribal, and Federal Environmental Activity Database
 - Local Records
 - Physical Setting Sources
 - Historical Use Information
- Site Reconnaissance
 - ASTs, USTs, odors, drums, wells, stressed vegetation, solid waste, septic system, energy source, etc.
- Interviews
 - Owner/operator, local officials, etc.
- Report

Freshwater Environmental Services

What a Phase I ESA is NOT

Non-scope considerations:

<i>Asbestos, Lead Based Paint</i>	<i>Cultural/Historical Resources</i>
<i>Radon</i>	<i>Health and Safety, Indoor air quality</i>
<i>Lead in drinking water</i>	<i>Ecological Resources (endangered species)</i>
<i>Wetlands</i>	
<i>Compliance</i>	

Freshwater Environmental Services

Four Tribal Brownfield Sites

- Former Brizards Gas Station
 - Highway 169
- Former Gold Mine
 - Highway 169
- Former Mill Site
 - Highway 169
- Former Illegal Dump Site
 - End of Tulley Creek Road

Freshwater Environmental Services

Former Brizards Gas Station

- Currently residential. Proposed Cal-Trans realignment.
- Former use of gasoline and potentially vehicle maintenance.
- 2 suspected USTs remain. Previous use of ASTs.
- Potential transformer oil release in recent winter storm.

Freshwater Environmental Services



Brizards RECs

- Former gas station.
- 2 suspected USTs.
- Historic ASTs with petroleum staining.
- Leachable lead in soil over hazardous level.
- One AST present.

Potential RECs:

- Former use of Site property for vehicle maintenance generating waste oils and solvents.

Freshwater Environmental Services

Former JC Gist Gold Mine

- Currently residential.
- Gold mining, 1880s - early 1900s.
- Mercury use documented. Sluices were 250 feet long.
- (Dutch Flat Mining District) 1,500 lbs of mercury/slucue at startup 1,200 lbs added every 3 days. Estimated to have lost up to 30 %. (113 lbs of mercury/gallon, 10-15 gallons startup)

Freshwater Environmental Services

Weitchpec Bar Mine (hydraulic). Consists of one unpatented claim of 20 acres located in the Weitchpec mining district at the village by that name in Sec. 10, T. 9 N., R. 4 E., at an elevation of 640 feet, and owned by J. C. Gist. The county road runs through the property. The bench gravels have a northwest and southeast direction and the bedrock is an altered schist. The gravel is medium size and loose. Water is taken from Weitchpec and Ben creeks and the Klamath River, 300 inches being brought to the mine in one mile of flume and ditch and under 125 feet pressure. There are 250 feet of 15-inch pipe and 1000 feet of 11-inch pipe, three giants, Nos. 1, 2, 3. One derriek for handling boulders, 250 feet of sluice boxes. Block riffles and quicksilver used to save the gold. There are a house and a barn on the mine. The gold is flaky. The mine works every winter and generally closes down the first of June. There is some platinum in the gravels.

Mine and Mineral Resources of Del Norte County Humboldt County Mendocino County, California State Mining Bureau, July, 1915

Freshwater Environmental Services



Date Unknown

Freshwater Environmental Services



Freshwater Environmental Services



Freshwater Environmental Services

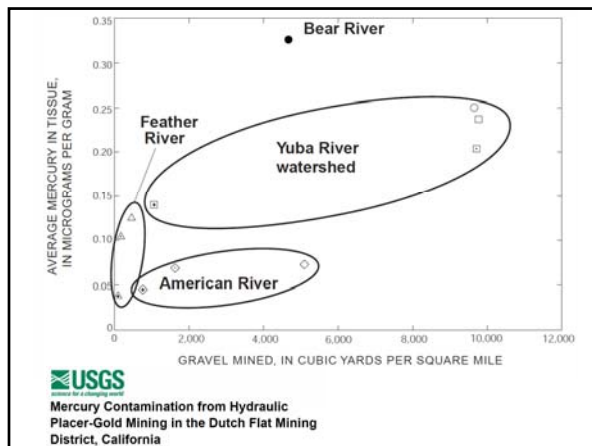


Freshwater Environmental Services

Former JC Gist Gold Mine RECs

- Site property used for gold mining with mercury in sluice boxes to extract gold.
- Current use of AST.

Freshwater Environmental Services



Former Lumber Mill Site

- Operated during 1960s.
- Wood treatment unknown.
- No structures except conical burner.
- On-going release of wood ash into stream.
- Evidence of former ponds on-site.

Freshwater Environmental Services





Former Mill Site RECs

- Use of conical burner, petroleum fueled and generated wood combustion byproducts including dioxins/furans and metals.
- Ongoing release of ash likely containing dioxins/furans and metals.
- Former use of petroleum products solvents for on-site fueling and vehicle/equipment maintenance.

Potential RECs:

- Possible former wood treatment in a green chain area.

Freshwater Environmental Services

Tulley Creek Illegal Dumpsite

- End of Tulley Creek Road.
- Debris removed in October 2008 including several dozen vehicles and travel trailers, industrial and general use batteries, burned debris, used motor oil, unlabeled containers that may have contained fuel and/or solvents, tires, household debris, etc.
- Acquired by the Yurok Tribe as part of large land acquisition in 1996.
- Former residence on-site demolished.
- Former trailer may have been used for meth production.
- Large tank labeled "potable".

Freshwater Environmental Services



Tulley Creek Illegal Dump RECs

- Former use of Site for illegal dumping of various hazardous materials including petroleum products, solvents, batteries, etc.
- Presence of former UST discarded on Site. Former use of the tank is unknown. More recently, it may have been used for water storage.

Potential RECs:

- Possible former use of Site for manufacturing methamphetamine, which generates waste solvents.

Freshwater Environmental Services

We Need Your Help

- Let us know if you recognize any of the photos or have any additional information regarding the Sites.
- Please complete the questionnaire.
- Contact us if you think of something else after the meeting.

Freshwater Environmental Services

Thank You

Freshwater Environmental Services

APPENDIX B

COMMUNITY OUTREACH QUESTIONNAIRE

Public Environmental Questionnaire

Property: Former Bizards Gas Station, Highway 169 (see attached map for exact location)

- 1) Do you have any recollection or knowledge of a gas station being located on this property? _____

 If yes,

- 1a) Approximately what dates do you think the gas station was present?

- 1b) Were there any above ground gasoline storage tanks? Where?

- 1c) Was any auto repair performed at the facility? _____

- 1d) Where was the location of the former gas station building?

- 2) Please describe property use on adjacent properties? _____

- 3) Do you have any recollection or knowledge of the use of this property prior to it being a gas station? _____

- 4) Are you aware of any potential environmental concerns on or near the property? If so, please describe.

Public Environmental Questionnaire

Property: Tulley Creek former illegal dump, end of Tulley Creek Road (see attached map for exact location)

- 1) Do you have any recollection or knowledge of an illegal dump being located on this property? _____

If yes,

- 1a) Can you describe typical items that were dumped on the property?

- 1b) Can you describe the location of any discarded materials that you think may be hazardous to the environment? Examples include batteries, gas cans, tanks, etc.

- 1c) Are you aware of any potential environmental concerns related to the property? _____

- 2) Please describe property use on adjacent properties? _____

- 3) Do you have any recollection or knowledge of the use of this property prior to it being used as an illegal dump?

- 4) Are you aware of any potential environmental concerns on or near the property? If so, please describe.

Public Environmental Questionnaire

Property: Former JC Gist Mine, near Highway 169 (see attached map for exact location)

- 1) Do you have any recollection or knowledge of a gold mine being located on this property? _____

 If yes,

- 1a) Can you describe the type of mining operation that was used?

- 1b) Can you describe the location of the sluice box?

- 1c) What years do you believe the mine was in operation?

- 1d) Are you aware of any potential environmental concerns related to the mining operation? _____

- 2) Please describe property use on adjacent properties? _____

- 3) A portion of the property is currently used for residential purposes. Do you recall or have knowledge of approximately when the property first started being used for residential purposes?

- 4) Are you aware of any property use other than mining or residential?

- 5) Are you aware of any potential environmental concerns on or near the property? If so, please describe.

Public Environmental Questionnaire

Property: Former mill site, Upper Cappell Road (see attached map for exact location)

1) Do you have any recollection or knowledge of a mill being located on this property? _____

If yes,

1a) Can you describe the locations of buildings on the property?

1b) Can you describe the location of the teepee burner?

1c) Was any wood treatment performed at the mill?

1d) Are you aware of any potential environmental concerns related to the mill operation? _____

1e) What kind of wood was milled? _____

1f) Are you aware of any potentially hazardous substances that may have been used at the mill, such as on-site vehicle repair or fueling or a green chain? _____

2) Please describe property use on adjacent properties? _____

3) Are you aware of any property use other than a mill or vacant?

4) Are you aware of any potential environmental concerns on or near the property? If so, please describe.

Personal information (optional)

Name _____

Phone Number _____

How long have you lived in the area? _____

If needed, may we contact you for additional information?

Yes _____

No _____